

VFR reporting points. Inbound stay 1900 feet – Outbound stay 1400 feet

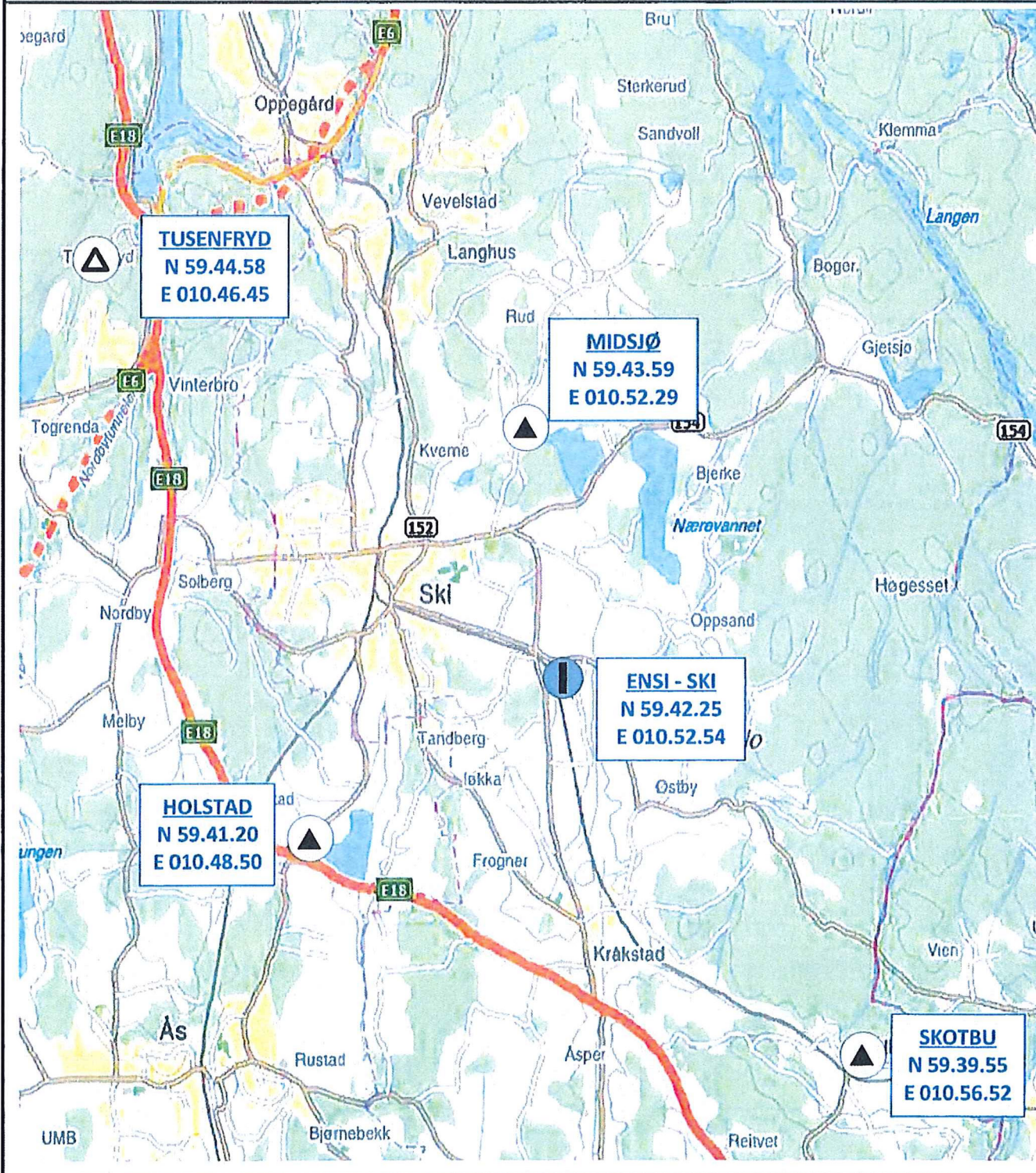
15 MAY 2013

TUSENFRYD	N 59.44.58	E 010.46.45
HOLSTAD	N 59.41.20	E 010.48.50
SKOTBU	N 59.39.55	E 010.56.52
MIDSJØ	N 59.43.59	E 010.52.29

Within TMA ( C ) OSLO EAST  
OSLO APPROACH E 118.475

SKI TRAFFIC 123.500 (NO, EN)

ENSI	SKI
Elev. 400'/122m	NORWAY
N 59.42,25' E 010 52,54'	0,5 NM E SKI



**Mandatory VFR reporting points.**

Inbound stay 1900 feet – Outbound stay 1400 feet

15 MAY 2013

MIDSJØ	N 59.43.59	E 010.52.29
HOLSTAD	N 59.41.20	E 010.48.50
SKOTBU	N 59.39.55	E 010.56.52

**LANDINGSRUNDE BANE 19  
FORLENGELSE AV RUNDEN**

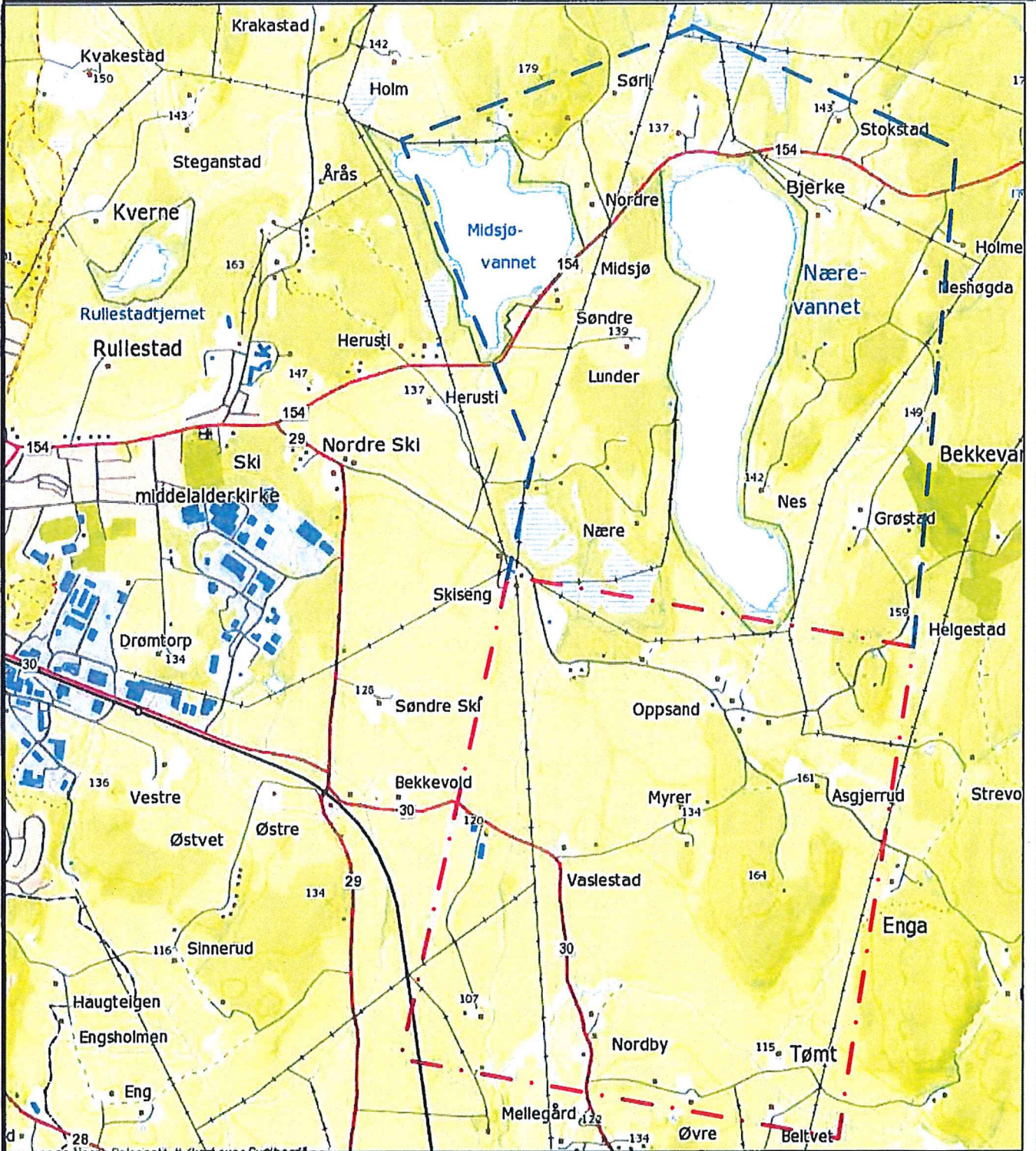
Within TMA ( C ) OSLO EAST  
OSLO APPROACH E 118.475

**ENSI** **SKI**  
Elev. 400'/122m **NORWAY**

SKI TRAFFIC 123.500 (NO, EN)

N 59.42,25'  
E 010 52,54'

0,5 NM E SKI



Mandatory VFR reporting points.

Inbound stay 1900 feet – Outbound stay 1400 feet

15 MAY 2013

MIDSJØ	N 59.43.59	E 010.52.29
HOLSTAD	N 59.41.20	E 010.48.50
SKOTBU	N 59.39.55	E 010.56.52

LANDINGSRUNDE BANE 01

Within TMA ( C ) OSLO EAST  
OSLO APPROACH E 118.475

ENSI  
Elev. 400'/122m

SKI  
NORWAY

SKI TRAFFIC 123.500 (NO, EN)

N 59.42,25'  
E 010 52,54'

0,5 NM E SKI

